

POWER SERIES

TDX<sup>®</sup> SP2  
ULM



Highly responsive mid wheel drive power chair  
with advanced ULM seating



| TDX® SP2 ULM

# Optimal comfort and performance.

The TDX® SP2 ULM (Ultra Low Maxx) is one of our highest performing mid wheel drive power chairs.

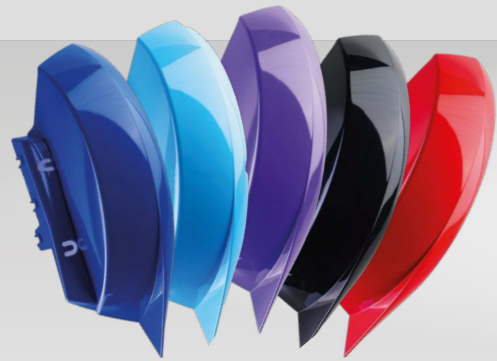
Quality and technology at its core, combined with our advanced ULM seating and intuitive LiNX® controls to give optimal comfort and performance every time.



| TDX® SP2 ULM

# It's more than a base.

The TDX® SP2 is built to perform and effortlessly take you where you want to go. Easy to control and manoeuvre to help give you more freedom and independence.



## New shroud collection

Choose from a selection of exciting new colour shrouds for a stylish look.



Width **650** mm



**560** mm turning radius



### Excellent manoeuvrability

The mid wheel drive makes navigation through tight spaces easier and gives you more controlled movement.



### Patented SureStep® suspension

Provides a smooth and comfortable ride even over challenging surfaces.



### Enhanced stability & safety

Designed to ensure all six wheels remain firmly on the ground with the integrated stability lock function.

| TDX® SP2 ULM

# New colours. Extra durability.

Add a fresh and stylish touch with a new shroud colour. The shroud's extra durability helps protect and withstand everyday challenges.



Obsidian Black

Ruby Red

Purple Passion

Peacock Blue

Arctic Blue

| TDX® SP2 ULM

# Designed for clinical excellence.

ULM seating has been designed by our clinical experts to offer optimal comfort and support with a personalised fit, to support greater independence and accessibility.

Built with integrated adjustment, along with the smart Ultra Rail system, ensures the ULM can be tailored to provide the correct combined seating solution.



## Extended shear reduction

Designed around the natural pivot points of the body with an optimised range of powered positioning to ensure the seating remains supportive and comfortable. Design helps minimise shear and manage pressure redistribution.



## Tailored positioning

Highly modular and adjustable to suit needs as they change over time.



## LNX legrests

Extends in length and height, working with powered recline to help shear.



## Award-winning Matrix®

Seating combines with a wide range and accessories to ensure a personalised and comfortable fit.





TDX® SP2 ULM



Working in combination with the highly adjustable ULM seating system, the award-winning **Matrix®** seating range gives you a more supportive fit with increased protection, to ensure maximum comfort.



### Headrests

Our highly adjustable Matrix Elan headrest range is designed to enable effective positioning. The dual density moulded foam provides immersion, comfort and protection.



### Bodypoint positioning belts

For optimal function, mobility and stability we offer a choice of chest and positioning belts. This helps ensure both pelvis and upper body are secure for more control and improved functionality.



### Hip guides and lateral thigh/knee supports

A range of supports in various shapes and sizes. Adjustable quick release brackets for enhanced positioning, which are easy to remove for transfers.



### Backrest options

A range of backrest options including our Matrix series are available for maximum postural support, pressure relief and exceptional microclimate control. Featuring built in contoured support for increased stability.



### Seat cushions

Choose from a selection of seat cushions that support positioning and skin protection. Our advanced Matrix Libra is designed with a dual layer Flo-tech sac for enhanced shear management and can be adapted with additional positioning options.

| TDX® SP2 ULM

# Featuring advanced **LiNX**® technology.

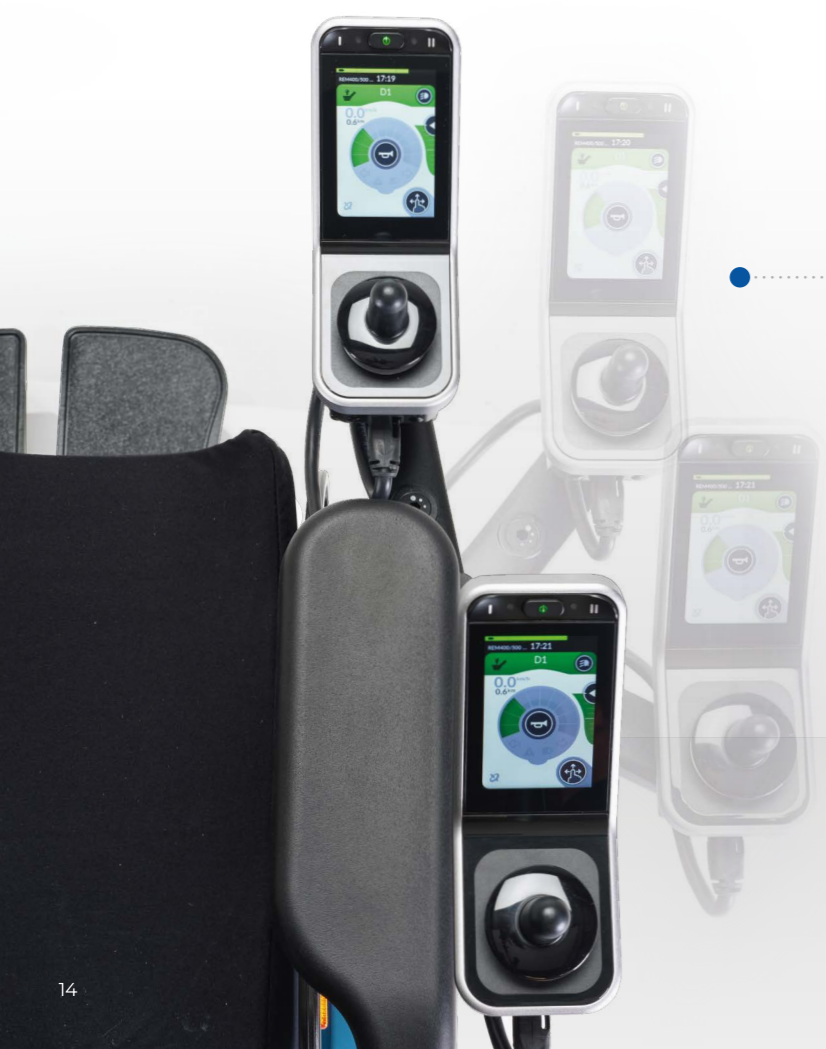
LiNX® technology helps give a personalised and confident drive experience. The innovative technology learns habits and preferences over time making it a super intuitive system.



| TDX® SP2 ULM

**LINX®**

**Discover more.**



**New Resolve joystick mount**

- Exceptional range of achievable joystick positions for optimised comfort.
- Adjustable tension release.
- Optimised comfort and control.



**3.5" Touchscreen**

Impressive 3.5" colour touchscreen with joystick, speedometer and an odometer.



**Specialist controls**

Including compact remotes, head arrays and four-switch proximity arrays.



**Built-in Bluetooth®**

Enables connectivity to devices and environmental controls.



**Control input options**

A variety of control input options allow a personalised set up for maximum control and reassurance that the power chair will react consistently.

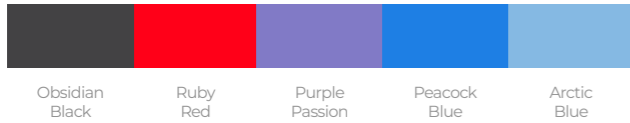


| TDX® SP2 ULM

# Technical data.

Further information about this product, including the user manual, please visit our website [www.invacare.co.uk](http://www.invacare.co.uk)

## New colours



Seat width	Seat depth	Seat height	Backrest height	Armrest height	Footrests	Seat angle
405 - 610 mm	405 - 580 mm	420 - 544 mm	355 - 685 mm	230 - 405 mm	290 - 465 mm	-10° - 50°
Backrest angle	Total height	Total length inc. footrests	Total length without footrests	Driving unit width	Max. user weight	Battery capacity
60° - 168°	1080 - 1210 mm	1290 mm	980 mm	650 mm	136 kg	73 Ah
Turning diameter	Max. climbable obstacle height	Max. safe slope	Speed	Driving range	Total weight	
1120 mm	75 mm	9° / 15.8%	up to 12 km/h	up to 41 km	183 kg	

| TDX® SP2 ULM

# Share your thoughts and help shape the future of power chairs.

We invite you to **share your feedback**. Your insights will help us better serve the power chair community.

Please scan and complete the form.



Thank you for letting us join your journey.

**Invacare Power Series Team**



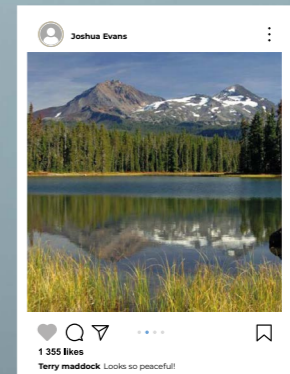
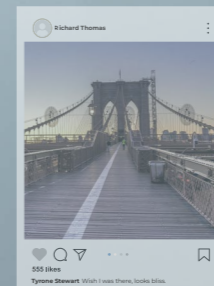
Share your feedback.

SUBSCRIBE



My chair allows me to live an independent life and get outdoors everyday.

**Ian Mackay**  
Invacare Ambassador



P O W E R   S E R I E S

**TDX SP2**

AVIVA RX

AVIVA FX

Esprit Action

Storm 4

**T: +44 1656 776222**

[uk@invacare.com](mailto:uk@invacare.com)

[www.invacare.co.uk](http://www.invacare.co.uk)

[www.invacare.ie](http://www.invacare.ie)

© 2024 Invacare International GmbH. All rights reserved.  
All information quoted is believed to be correct at time of print.  
Invacare reserves the right to alter product specifications without  
prior consultation. UK - TDX SP2 ULM - 11/2024

